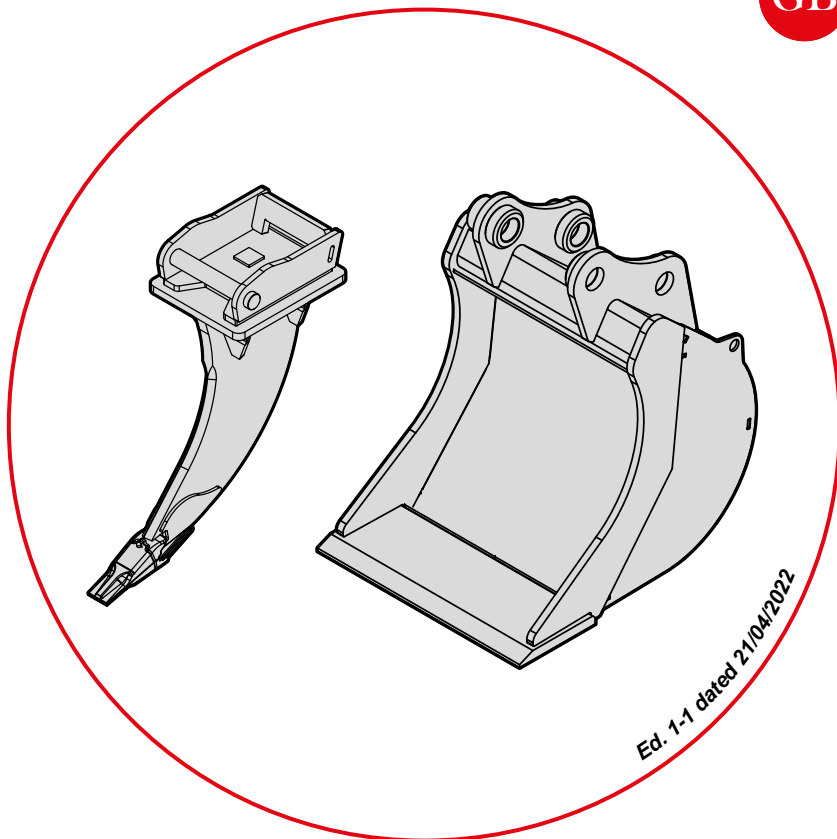


INSTRUCTIONS FOR USE

ORIGINAL INSTRUCTIONS



Ed. 1-1 dated 21/04/2022

DIGGING BUCKET - RIPPER





**WARNING
MACHINE SERVICE LIFE**

The machine's service life is 5 YEARS.

Once 5 YEARS have passed after the construction date marked on the nameplate, the machine must be overhauled by a CANGINIBENNE s.r.l. authorised service centre.

For the necessary arrangements, contact the CUSTOMER CARE SERVICE:

Tel. 0039 - 0547 - 698020

Fax. 0039 - 0547 - 698021

E-mail: service@canginibenne.com

CANGINIBENNE S.R.L. sets the attachment's END OF LIFE AT 10 YEARS, unless it is dispatched to the Constructor for a general overhaul.

CANGINIBENNE srl

Via Savio, 29/31 - 47027 Sarsina FC - Italy
tel. 0039 0547 698020 - fax 0039 0547 698021

commerciale@canginibenne.com
www.canginibenne.com

ADESIVO PRESTAMPATO

The constructor declares that the tool has been designed in accordance with the provisions of

- EN 474-1:2006+A1:2009, specifically point 5.12.1
- EN 474-4:2006+A1:2009, specifically point 5.5.3.2
- EN 474-5:2006+A3:2013, specifically points 5.6.2 and 5.8.4.2

TABLE OF CONTENTS

1	GENERAL INTRODUCTION.....	5	10	ANNEXES	26
1.1	Glossary and terminology.....	5	10.1	ANNEX - A - Extraordinary maintenance log	26
2	GENERAL PRECAUTIONS.....	6			
2.1	Manufacturer	6			
2.2	Spare parts.....	6			
2.3	After-sales service	6			
3	SAFETY	7			
3.3.1	Markings.....	7			
3.1	Intended use.....	7			
4	GENERAL INFORMATION	8			
4.1	Nameplate	8			
4.2	Model and type.....	9			
5	TECHNICAL DATA.....	10			
5.1	Limits of application	10			
6	HANDLING.....	14			
6.1	Lifting.....	14			
7	INSTALLATION	15			
7.1	Attachment Installation Instructions	15			
7.1.1	Fitting the digging bucket.....	15			
7.2	Attachment uncoupling instructions	17			
7.2.1	Fitting the ripper	17			
7.3	Installation instructions for supplementary blade.....	18			
7.3.1	Blade with welded teeth	18			
7.3.2	Blade with bolted teeth.....	19			
7.4	Operation.....	20			
8	OPTIONAL KITS	21			
8.1	bucket transporting hooks.....	21			
8.2	MAINTENANCE	22			
8.3	Routine maintenance	22			
8.3.1	Check the adapter for wear (when present).....	23			
9	WARRANTY CONDITIONS	24			
9.1	Items not covered by the warranty.....	25			

1 GENERAL INTRODUCTION

This manual provides all necessary information for the safe use and maintenance of the **CANGINIBENNE** attachment.



DANGER

Compatibility between the tool and the machine, including safety issues, must be assessed using the information provided in the construction machine instruction manuals and the information supplied in this document.

1.1 GLOSSARY AND TERMINOLOGY

The tool covered by this manual “Digging bucket - ripper” will be referred to hereinafter as the “**Attachment**”, while the machine on which it is mounted will be referred to as the “**MACHINE**”.

2 GENERAL PRECAUTIONS

2.1 MANUFACTURER

CANGINIBENNE s.r.l.

Via Savio, 29-31 - 47027 Sarsina (FC) - Italy Tel. 0547-698020 - Fax 0547-698021

2.2 SPARE PARTS

To ensure that the attachment continues in perfect working order, remember only genuine spare parts must be used during any repairs or replacements.

When ordering spare parts specify:

- the attachment's serial number:
- the code number of the part required and the quantity.

2.3 AFTER-SALES SERVICE

If in doubt about the use or maintenance of the attachment, contact the manufacturer.



WARNING

The manufacturer declines all responsibility for accidents or damage arising from failure to comply with the rules and instructions listed in this manual and failure to comply with the safety and accident prevention regulations in force in the various countries.

3 SAFETY



DANGER

Correct, appropriate installation on the machine is fundamental for the attachment's safety and correct operation and must be carried out by a specialist service centre.

The signs and stickers indicating how to use the attachment and warning of dangers must not be removed, concealed or defaced.

During maintenance or adjustment of some parts of the attachment, hands must not be used to perform operations for which there are specific tools.




ATTENTION

Check every day and before every shift that the signs are in good condition and clearly legible. Replace them at once if they become damaged and ineffective, ordering duplicates directly from the manufacturer.

3.3.1 Markings

The table below lists the indelible safety markings printed on the attachment.

SYMBOL		MEANING
	20600066	Lifting points: for safe handling of the implement, connect it to the points provided, marked with the relevant sticker. Use suitable lifting equipment and regulation accessories.

3.1 INTENDED USE

All relevant legal occupational health and safety requirements must be complied with.



ATTENTION

Every day and before each work shift check the condition and the legibility of the markings. Contact CANGINIBENNE for repairs if damage renders them illegible.



WARNING

Use of the attachment without one or more signs exposes the operator to unacceptable residual risks and must therefore be prevented.



WARNING

Use of the attachment without one or more safety markings exposes the operator to unacceptable residual risks and must therefore be prevented.

4 GENERAL INFORMATION



ATTENTION

Check that the operator's manual corresponds to the attachment in question. When requesting information and/or after-sales service, always specify the model and serial number embossed on the nameplate.

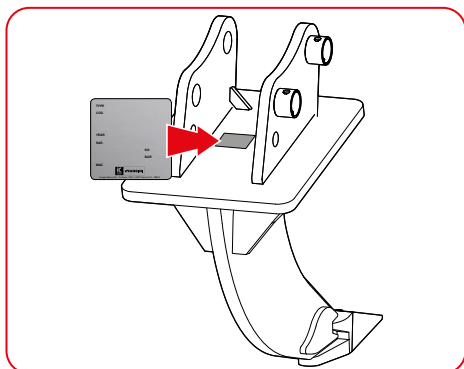
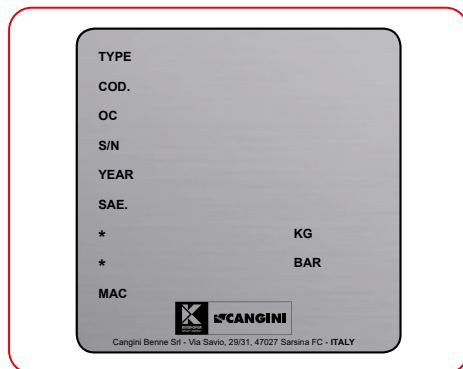
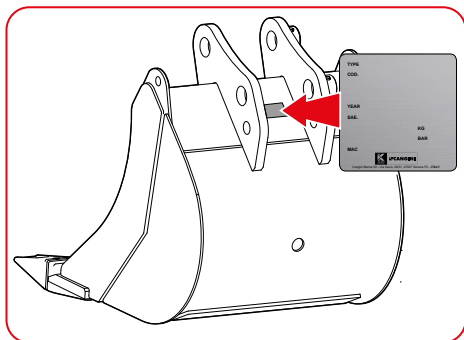
4.1 NAMEPLATE

The manufacturer's nameplate with the product's technical data is normally affixed in the position shown by the arrow below. This position may vary depending on the machine's linkage type and configuration.



ATTENTION

If the nameplate is lost or defaced, a copy must be requested immediately.



4.2 MODEL AND TYPE

STANDARD	NETHERLANDS	SCANDINAVIAN
<input type="checkbox"/> SC / SC GD <input type="checkbox"/> SCR / SCR GD <input type="checkbox"/> SP / SP GD <input type="checkbox"/> SQ / SQ GD <input type="checkbox"/> T / T GD <input type="checkbox"/> VE / VE GD <input type="checkbox"/> SB / SB HD <input type="checkbox"/> SPR / SPR HD <input type="checkbox"/> SQR / SQR HD	<input type="checkbox"/> SCN <input type="checkbox"/> BN <input type="checkbox"/> VN <input type="checkbox"/> SPA <input type="checkbox"/> SQN	<input type="checkbox"/> SCS GD / SCS HD <input type="checkbox"/> BS GD / BS HD <input type="checkbox"/> VS GD <input type="checkbox"/> SPS 8° GD / SPS 8° HD <input type="checkbox"/> SPS 25° GD / SPS 25° HD <input type="checkbox"/> SQS 8° GD / SPS 8° HD

Serial number



ATTENTION

Place an X (X) in the relevant box, after checking the type on the nameplate.



ATTENTION

Make a note of the serial number on the nameplate to ensure that it is to hand when communicating with the dealer or manufacturer (e.g. when requesting service under warranty).

5 TECHNICAL DATA

The technical data are stated in this machine's declaration on Pag. 3 and on the manufacturer's nameplate affixed to the product.



ATTENTION

For any further information, contact CANGINIBENNE.

5.1 LIMITS OF APPLICATION

The table shows the possibility of application of the attachment in relation to the weight of the machine it shall be coupled to.



ATTENTION

The manufacturer's advice must be sought on combinations not covered by the table below.



DANGER

A correct coupling of the attachment to the operating and/or agricultural machinery is of the utmost importance since the non-compliance with the criteria indicated herein may result in a machine overturning.

TON	“STANDARD” BUCKET MODEL						
	SC	SCR	SB	SP	SPR	T	VE
0,6 ÷ 1,2	27	-	-	30	-	38	38
1,2 ÷ 1,8	36	36	-	35	35		
1,2 ÷ 1,8	38	38	38				
1,8 ÷ 2,5	45	45	45	40	40	45	45
2,5 ÷ 4,0	53	53	53			53	53
4,0 ÷ 5,0	62	62	62	45	45	62	62
5,0 ÷ 7,5	67	67	67	50	50	67	67
7,5 ÷ 10,0	73	73	73	55	55	73	73
10,0 ÷ 12,0	80	80	80	60 (*)	60 (*)	80	80
12,0 ÷ 14,0	85 (*)	85 (*)	85 (*)	-	-	-	85 (*)

TON	“STANDARD” GD BUCKET MODEL				
	SC	SP	SQ	VE	T
12,0 ÷ 14,0	92 GD (**)	-	-	92 GD (**)	85 GD (*)
12,0 ÷ 14,0	-	-	-	-	92 GD
12,0 ÷ 18,0	-	65 GD (**)	65 GD (**)	-	-
14,0 ÷ 18,0	100 GD	-	-	100 GD	100 GD
18,0 ÷ 22,0	110 GD	70 GD	70 GD	110 GD	110 GD

TON	“STANDARD” HD BUCKET MODEL			
	SCR	SB	SPR	SQR
12,0 ÷ 14,0	92 HD (**)	92 HD (**)	-	-
12,0 ÷ 18,0	-	-	65 HD (**)	65 HD (**)
14,0 ÷ 18,0	100 HD	100 HD	-	-
18,0 ÷ 22,0	110 HD	110 HD	70 HD	70 HD

(*) MIDI / (**) EXCAVATOR

TON	“STANDARD” SQ BUCKET MODEL	
	SQ	SQR
1,0 ÷ 1,8	30	-
1,8 ÷ 2,5	35	35
2,5 ÷ 4,0	40	40
2,5 ÷ 4,0	45	-
4,0 ÷ 5,0	-	45
5,0 ÷ 7,5	50	50
7,5 ÷ 10,0	55	55
10,0 ÷ 12,0	60 (*)	60 (*)

TON	“NETHERLANDS” BUCKET MODEL			
	SCN	BN	VN	SPN
0,6 ÷ 1,2	35	35	35	28
1,2 ÷ 1,8	41	41	41	35
1,8 ÷ 2,5	52	52	52	41
2,5 ÷ 4,0	60	60	60	44
4,0 ÷ 6,0	66	66	66	50
6,0 ÷ 7,5	75	75	75	55
7,5 ÷ 12,0	85	90	85	66

TON	“NETHERLANDS” SQ BUCKET MODEL
	SQN
1,0 ÷ 1,8	28
1,5 ÷ 2,5	35
2,2 ÷ 3,5	41
3,2 ÷ 4,5	44
4,2 ÷ 6,5	50
6,2 ÷ 7,5	55
7,5 ÷ 12,0	66

TON	“SCANDINAVIAN” BUCKET MODEL		
	SCS	BS	VS
	GD / HD	GD / HD	GD
0,8 ÷ 1,5	35	35	35
1,5 ÷ 2,0	40	40	40
2,0 ÷ 3,0	48	48	48
3,0 ÷ 4,0	60	60	60
4,0 ÷ 6,0	67	67	67
6,0 ÷ 7,5 t	71	71	71
7,5 ÷ 9,0	75	75	75
9,0 ÷ 12,0	80	80	80
12,0 ÷ 14,0	85 (*)	85 (*)	85 (*)
	92 (**)	92 (**)	92 (**)
14,0 ÷ 18,0	100	100	100
18,0 ÷ 22,0	110	110	110

TON	“SCANDINAVIAN” BUCKET MODEL		
	SPS - 8°	SPS - 25°	SQS - 8°
	GD / HD	GD / HD	GD / HD
0,8 ÷ 1,5	30	30	30
1,5 ÷ 2,0	35	35	35
2,0 ÷ 3,0	40	40	40
3,0 ÷ 4,0	45	45	45
4,0 ÷ 6,0	50	50	50
6,0 ÷ 7,5	55	55	55
7,5 ÷ 12,0			
12,0 ÷ 18,0	65 (**)	65 (**)	65 (**)
18,0 ÷ 22,0	70	70	70

(*) MIDI / (**) EXCAVATOR

6 HANDLING

All handling operations must be carried out only by operators qualified to use the necessary attachment.

When handling, the operator must ensure that safety conditions are complied with, to protect himself and the other operators involved from injury.

6.1 LIFTING

When lifting the attachment:

- use only lifting accessories which bear the CE marking (2006/42/CE).
- connect only to the points shown.



DANGER

Make sure that the crane, the slings as well as the fork truck are proper for lifting the machine (lifting capacity greater than the weight as given on page 3)



DANGER

Do not pass or stand underneath the implement during lifting.



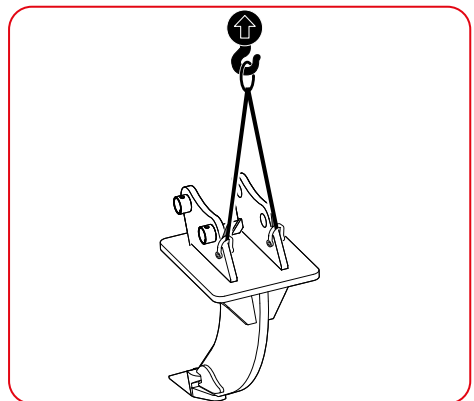
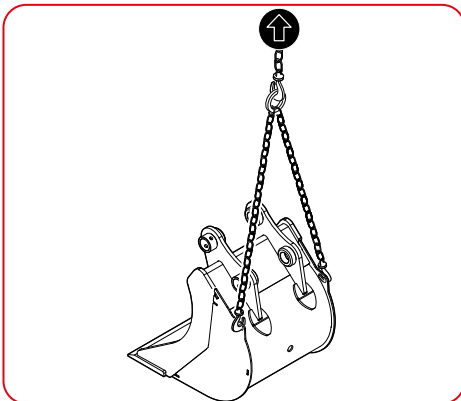
DANGER

The handling of the attachment must be carried out using the lifting points.



DANGER

Don't use the handling's holes to lifting loads.



7 INSTALLATION

The machine-attachment hitching system may vary depending on the model of machine. For linkages other than those shown below, follow the instructions in the machine's operator's manual.

7.1 ATTACHMENT INSTALLATION INSTRUCTIONS

7.1.1 Fitting the digging bucket

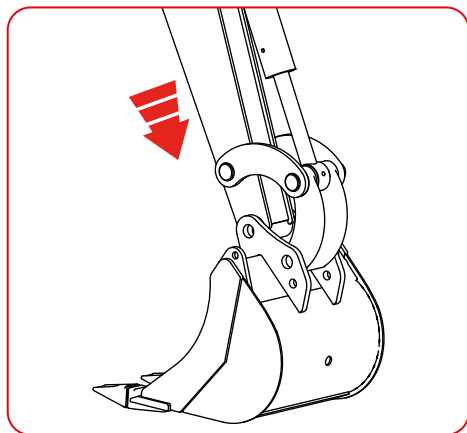


DANGER

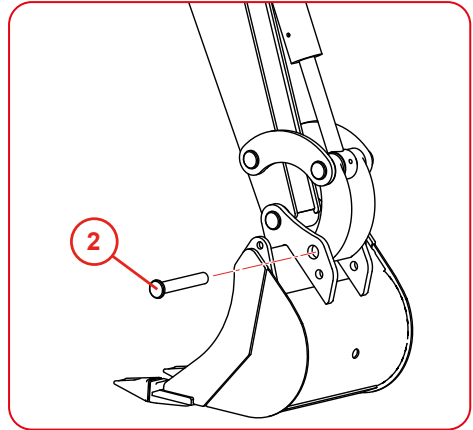
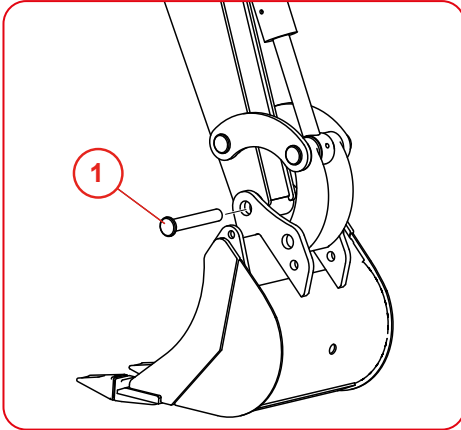
The bucket fitting and dismantling operations must be carried out by two competent people, one to operate the machine and the second to check the hole alignments and insert the pins. During the fitting and dismantling operations the second operator must always stand at one side of the bucket.

The steps in the procedure for mounting the attachment on the machine are described below.

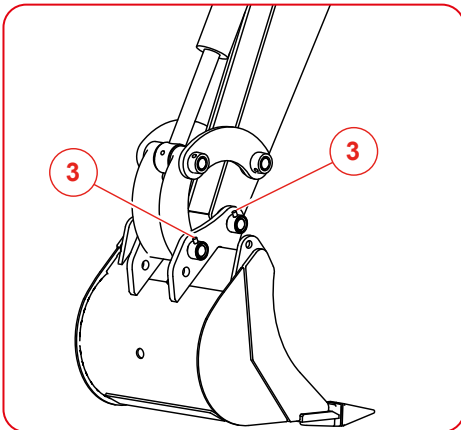
- Move the machine boom near the bucket attachment and check that the holes are properly aligned correctly.



- Insert pin 1.
- Align the second hole and insert pin 2.



- Secure the pins using the locking devices 3 provided.



⚠ DANGER

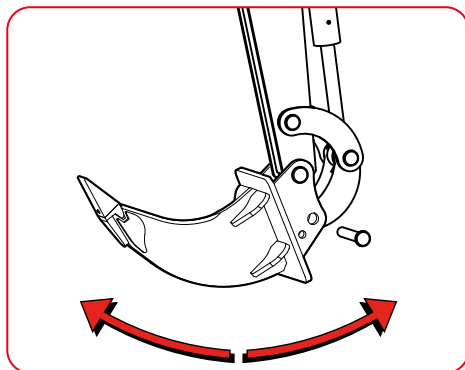
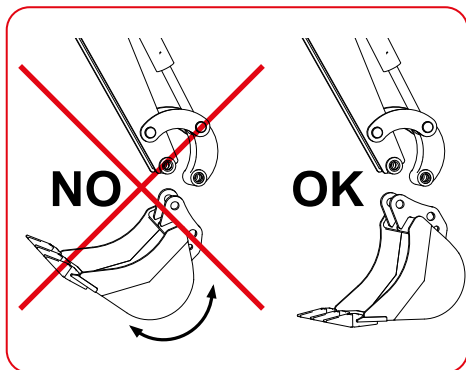
After coupling the attachment, before using it perform a visual inspection to ensure that it is connected correctly. Incorrectly connected attachments may be hazardous for the operator or for people and property in the working area.

7.2 ATTACHMENT UNCOUPLING INSTRUCTIONS



DANGER

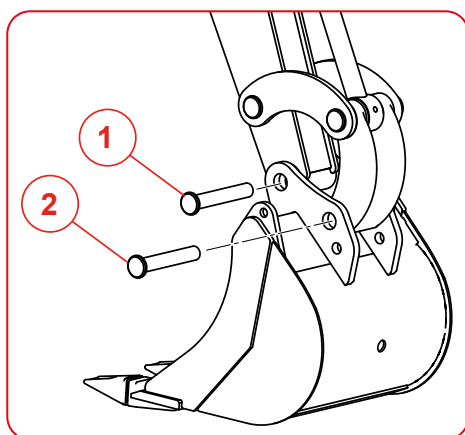
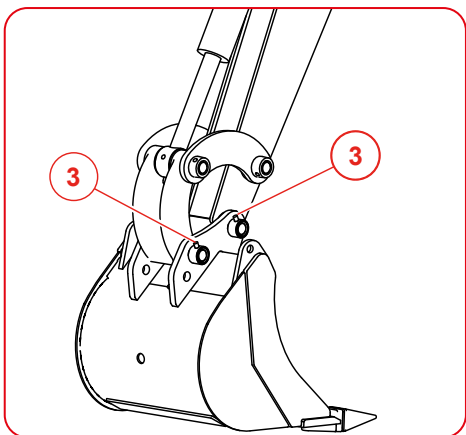
Before proceeding, place the attachment on the ground in a stable, safe position. In view of its shape, the ripper could rock dangerously once uncoupled if it is not positioned correctly. Therefore, always keep to one side of it.



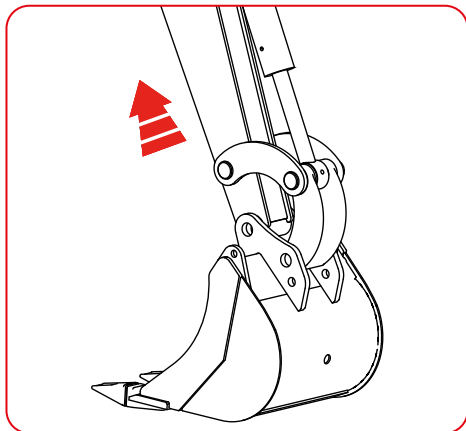
7.2.1 Fitting the ripper

The steps in the procedure for mounting the attachment on the machine are described below.

- Secure the pins using the locking devices **3** supplied.
- Insert pins **1 - 2**.



- Free the boom of the machine from the bucket coupling.

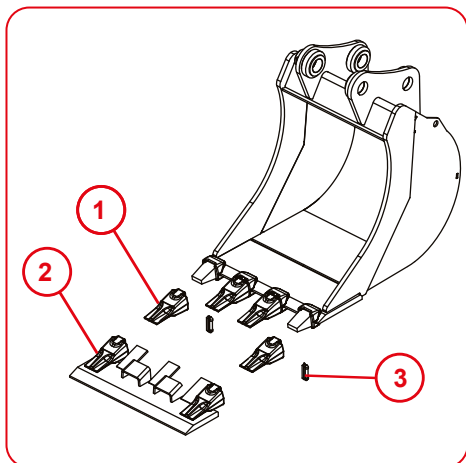


7.3 INSTALLATION INSTRUCTIONS FOR SUPPLEMENTARY BLADE

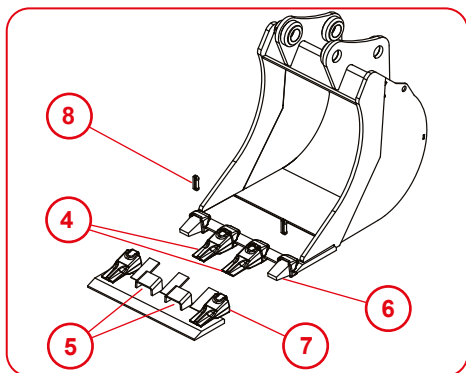
The supplementary blade serves for digging a flat surface using a bucket whose teeth are welded or bolted to the blade.

7.3.1 Blade with welded teeth

- Remove the tips of the tooth **1** corresponding to those on the supplementary blade **2** by pulling out the retainer pins **3**.



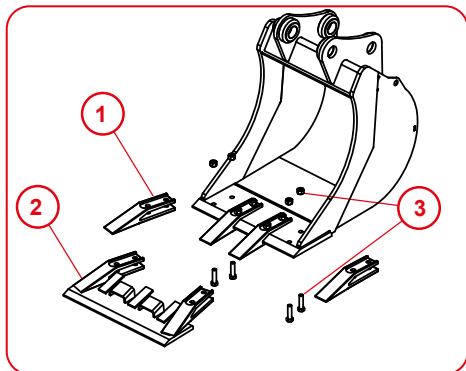
- Insert the teeth remaining on the bucket **4** into the mounts **5** and fit the tips **6** into the tip holders **7** on the bucket. Insert the pins **8** into those teeth which lack them and resume work.



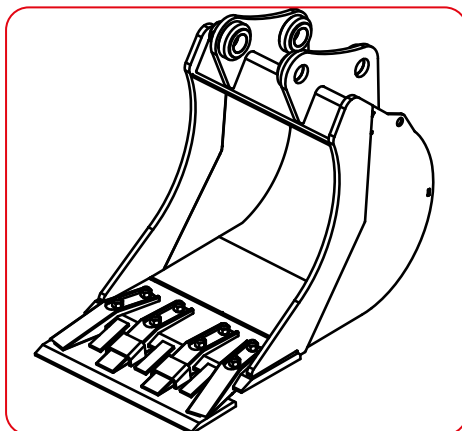
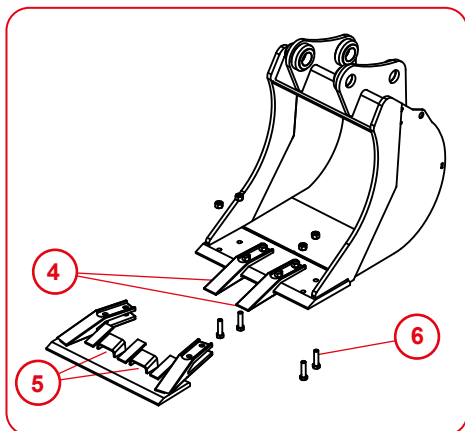
7.3.2 Blade with bolted teeth

The supplementary blade serves to prevent wearing down the edge of the bucket's blade, which can result in poor mounting of the teeth to the blade and hence, over the long term, breakage of the bucket's teeth or blade itself.

- Remove the teeth **1** corresponding to those on the supplementary blade **2** by undoing the bolts **3** securing them to the bucket's blade.



- Insert the remaining teeth on the bucket **4** into the mounts on the supplementary blade **5**. Screw the bolts and nuts **6** into those teeth which lack them and resume work.



7.4 OPERATION



DANGER

The attachment may increase the reach of the machine on which it is installed, which may lead, in some working configurations, to dangerous collisions (e.g. during boom retraction).



ATTENTION

CANGINIBENNE does not accept any liability for injury or damage arising from misuse of the attachment.



8 OPTIONAL KITS

The attachment can be equipped with the following optional accessories:

- bucket transporting hooks;

8.1 BUCKET TRANSPORTING HOOKS

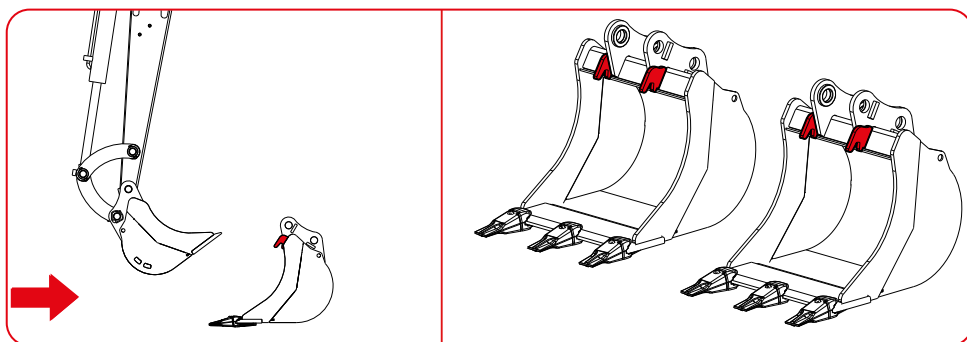
To use the hooks, proceed as described below.



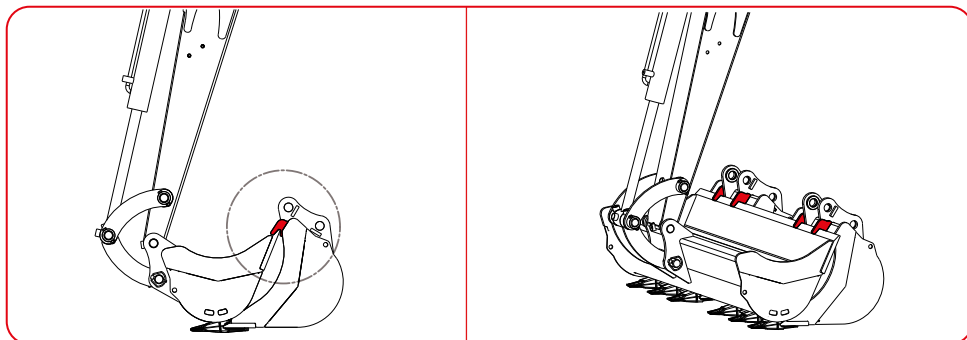
DANGER

Move slowly and pull the slings tight.

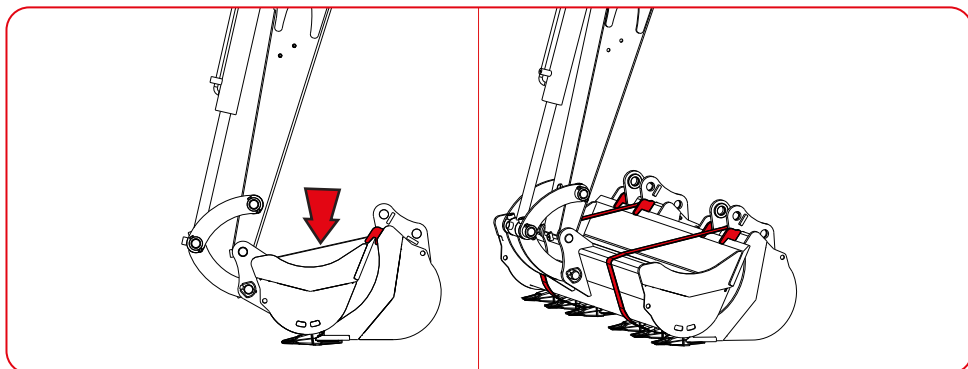
- Approach the buckets to be coupled slowly with the attachment attached to the boom of the machine.



- Carefully connect to the buckets on the ground.



- Secure the buckets by means of slings of suitable size for the weight to be lifted.



8.2 MAINTENANCE

Only regular maintenance procedures recommended by the manufacture will keep the attachment in good working order and safe.

- Check that all components are in good condition, there are no oil leaks and the guards are in place and operating correctly.
- Clean the attachment completely at the end of each working shift.



ATTENTION

Failure to comply with the maintenance instructions provided in this manual will automatically invalidate the CANGINIBENNE product warranty.



DANGER

All attachment inspection and/or maintenance procedures must be carried out with the machine off and in a stable, safe position.



ATTENTION

All extraordinary maintenance procedures carried out on the attachment must be recorded in the tables, annexed to this manual. Always give this manual to the CANGINIBENNE engineer so he can record any work done.

8.3 ROUTINE MAINTENANCE

Inadequate or incorrect maintenance may make the attachment dangerous for the operator and for the people in the surrounding area; make sure that maintenance operations are carried out according to the manufacturer's instructions.



ATTENTION

Check that any defects found are eliminated before using the attachment.



WARNING

The time intervals stated for the maintenance procedures listed in this manual are purely guideline and refer to normal operating conditions; they may therefore be subject to variation depending on the type of duty, environmental conditions and seasonal factors.

Within the first 50 operating hours.

- Check the tightening and integrity of all fixing devices of the bucket.
- Check the integrity of the structure of the bucket and its moving parts.

Every 10 operating hours or daily.

- Check that the safety decals and plates are not damaged.
- If lifting attachment is installed, check the state of the hook, the safety retainer and its chains or ropes.

Every 50 operating hours.

- Check the tightening and integrity of all fixing devices of the bucket.
- Check the integrity of the structure of the bucket and its moving parts.
- Periodically check the wear of the teeth and replace them if necessary according to the following instructions:
 - 1) place the bucket in the horizontal position and rest it on the supporting blocks about 50 cm above the ground;
 - 2) loosen and remove any bolts, pins or other devices fixing the tooth to the bucket;
 - 3) remove the mobile part of the worn tooth from its seat;
 - 4) fit a new mobile part into the special seat;
 - 5) fix the tooth to the bucket by the special locking devices;
 - 6) after a few hours, ensure the locking of the bucket tooth is efficient.

Every 100 working hours.

- Perform a visual inspection of the welds: check that they are free from cracks, deformation, wear, failures or rust. If in doubt about the condition of the weld, contact **CANGINIBENNE**.

8.3.1 Check the adapter for wear (when present)

Every 250 hours or every 3 months check the adapter for wear.



WARNING

For ATTACHMENTS fitted with the aid of a quick coupling adapter, refer to the Operator's Manual of the quick coupling used.

9 WARRANTY CONDITIONS

- 1) The Seller guarantees that the products and/or spare parts are free from defects and that they comply with the technical specifications declared in the product technical manuals and the documentation supplied to the Buyer.
- 2) The warranty is valid for 12 months from the time when the Product and/or spare parts and/or Product parts leave the Seller's premises.
- 3) The Seller is not liable, even with regard to damage to third parties, for misuse of the products and/or spare parts, or their use in breach of the provisions of the use and maintenance manuals, or for their use by unskilled personnel.
- 4) In case of tampering with the products and/or spare parts or any maintenance and/or repair of the same, or replacement of parts without the Seller's written authorisation, the warranty shall be voided.
- 5) On receipt of the products and/or spare parts, the Buyer shall inspect their packaging and check their quantity and that they comply with the order confirmation, entering any discrepancies in the delivery note.
- 6) All defects or nonconformities in products and/or spare parts must be reported to the Seller, in writing, within 8 days after receipt, enclosing a detailed report and photographic documentation of the claimed faults and a copy of the delivery note containing the complaints entered in it.
- 7) Catalogues, price lists and marketing material supplied by the Seller containing guideline images and descriptions of the product cannot be used as proof of the Product's nonconformity.
- 8) After verification that the product claimed to be faulty is entitled to warranty cover, Cangini Benne shall decide now to proceed, while guaranteeing that the problem will be resolved in the shortest possible times.
- 9) All products and/or spare parts, including those sent as replacements or prior to verification of the warranty cover, shall be dispatched with sales delivery document and billed to the Buyer. After the appropriate checks, if the replacement is found to be within the terms of the Warranty, the Seller will proceed to issue a credit note
- 10) This warranty does not cover any direct or indirect damage to the Customer or third parties, damage from loss of earnings, accidental damage, commercial damage, delays in works, reputational damage or any other damage to the Buyer, or its internal handling costs. The warranty does not cover travel expenses for the dispatch of products and/or spare parts
- 11) The Seller reserves the right to send the Buyer a replacement product and/or spare part for the time necessary for any checks and repairs.

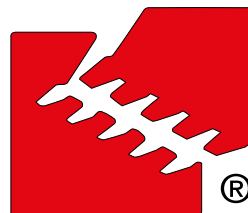
9.1 ITEMS NOT COVERED BY THE WARRANTY

- 1) Carriage will be payable by the customer, who shall organise it or place it in the hands of **CANGINIBENNE S.r.l.**, which will charge for the relative expenses.
- 2) Under no circumstances shall **CANGINIBENNE S.r.l.** (or the authorised dealer) be considered responsible for the cost of work stoppages, unavailability of the attachment for use, or other consequent or special incidental damages.
- 3) The warranty does not cover damage arising from misuse or any use not compliant with the specifications explained in the Operator's Manual supplied with the product. Nor does it cover damage due to normal wear and tear of the product.
- 4) **CANGINIBENNE S.r.l.** shall not provide any warranty in the event of:
 - total or partial failure to perform maintenance;
 - negligent use of the attachment;
 - the use of machine-attachment combinations not permitted by **CANGINIBENNE S.r.l.** on the customer's own initiative;
 - repairs and/or modifications to the articles covered by the warranty without the prior written authorisation of **CANGINIBENNE S.r.l.**;
 - failure to comply with payment terms.
- 5) **CANGINIBENNE S.r.l.** does not grant any type of warranty not specifically stated.
- 6) Any waivers of the above must be authorised in writing by **CANGINIBENNE S.r.l.**
- 7) **CANGINIBENNE S.r.l.** is not liable for damage or accidents to people or property caused by the owners of **CANGINIBENNE** attachments.
- 8) No agent, dealer or representative is authorised to issue warranties in the name of **CANGINIBENNE S.r.l.** except as specified above.
- 9) For all warranty requests, always state:
 - model;
 - serial number;
 - date of purchase;
 - dealer's name.
- 10) Any disputes arising with regard to this manual which cannot be settled by agreement between the parties shall be subject to the laws of the Republic of Italy and the Forlì Law Court shall have jurisdiction.

10.1 ANNEX - A - EXTRAORDINARY MAINTENANCE LOG

[illegible]





CANGINIBENNE srl

Via Savio, 29/31

I-47027 Sarsina FC

tel. 0039 - 0547 - 698020

fax 0039 - 0547 - 698021

commerciale@canginibenne.com
www.canginibenne.com

**COMPANY WITH UNI EN ISO 9001 - 2015
CERTIFIED SYSTEM**